

SR and SL truss positions dependant on sightlines

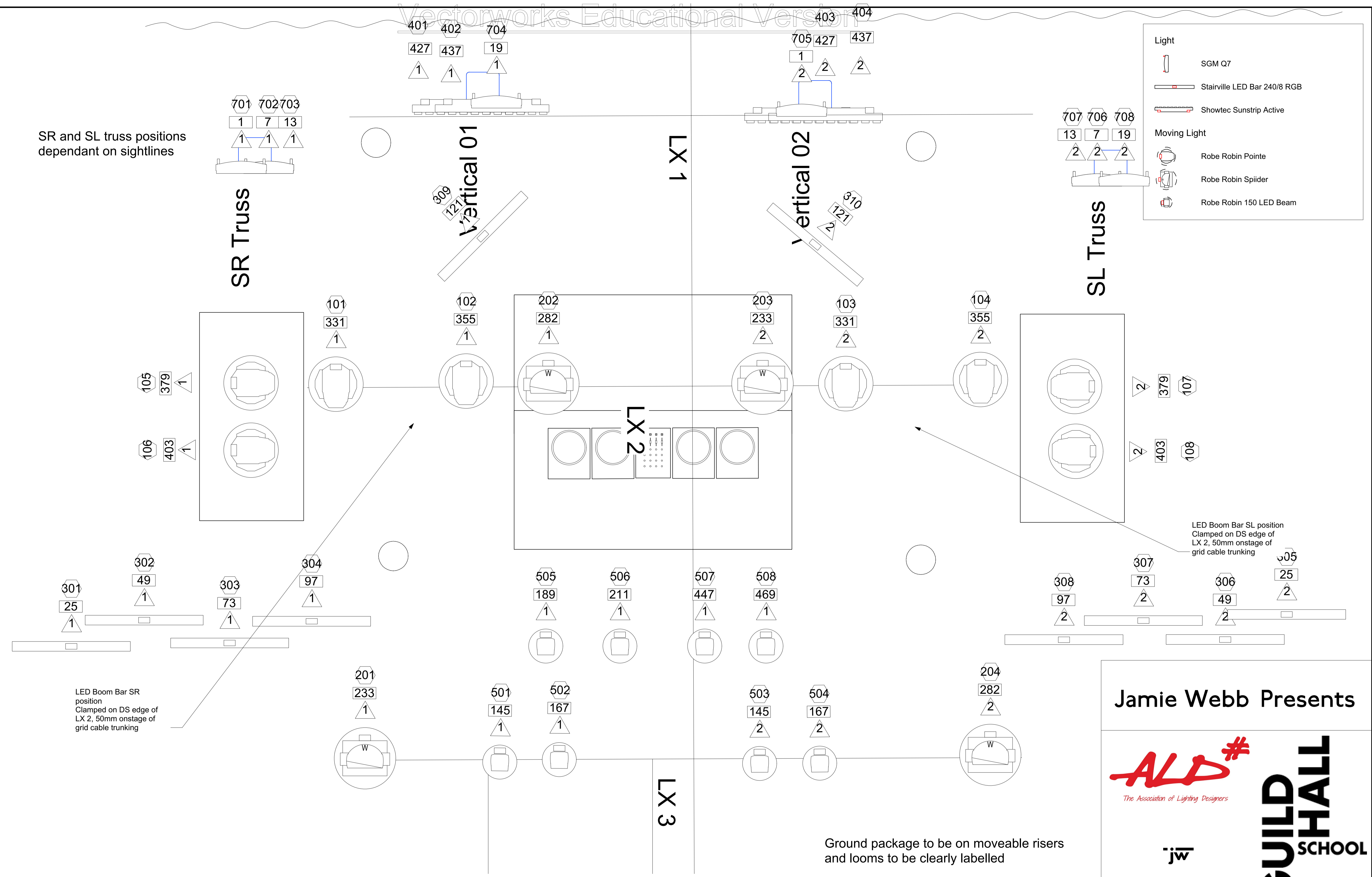
Light

- SGM Q7
- Stairville LED Bar 240/8 RGB
- Showtec Sunstrip Active

Moving Light

- Robe Robin Pointe
- Robe Robin Spider
- Robe Robin 150 LED Beam

Scale: 1:16
Master Top 1



LED Boom Bar SR position
Clamped on DS edge of LX 2, 50mm onstage of grid cable trunking

LED Boom Bar SL position
Clamped on DS edge of LX 2, 50mm onstage of grid cable trunking

Ground package to be on moveable risers and looms to be clearly labelled

LED Bar booms labelled from left to right and top to bottom

Universes split down the datum
Universe 1 = SR
Universe 2 = SL

Please note that this rule does not apply to ground package 150's (channels 505 > 508)

Jamie Webb Presents

Basement Bar EC1

Master Top Plan

ALD Membership No. 2694

Scale : 1:16 Date :08/01/2020 Drawn By : Jamie Webb